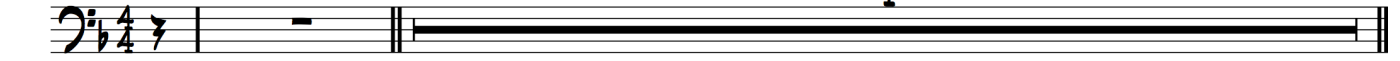


# SAVE IT PRETTY MAMA

FROM CRAIG KLEIN, NEW ORLEANS TROMBONISMS

♩ = 110

4



F DM G7 C7 F C7

F FM C A7 DM G7 C7

F DM G7 C7 F C7

F7 Bb Bbm F DM G7 C7 F

F DM G7 C7 F C7

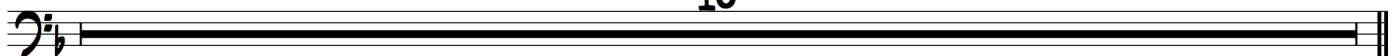
F FM C A7 DM G7 C7

F DM G7 C7 F C7

F7 Bb Bbm F DM G7 C7 F

VOCAL

16



PIANO

32

BASS

15

3

**SOLO - 3:31**

F DM G7 C7 F C7 GROWL  
 F FM C A7 DM G7 C7 TRILL  
 F DM G7 C7 F C7  
 F7 Bb Bbm F DM G7 C7 F TRILL  
 F DM G7 C7 F C7  
 F FM C A7 DM G7 C7 TRILL  
 F DM G7 C7 F C7 GROWL GROWL  
 F7 Bb Bbm F DM G7 C7 F

Detailed description of the musical score: The score is written for bass in a key with one flat (Bb). It consists of ten staves of music. The first staff shows a double bar line with a '32' above it, followed by a 'BASS' section with a '15' above it. The solo begins with a triplet of eighth notes. Chords are indicated above the notes. Performance instructions include 'GROWL' (marked with a > symbol) and 'TRILL' (marked with a trill symbol). There are several triplet markings (3) throughout the piece. The piece concludes with a final triplet of eighth notes.