

ROYAL GARDEN BLUES

FROM KID ORY, KID ORY PLAYS THE BLUES

$\text{♩} = 85$

F

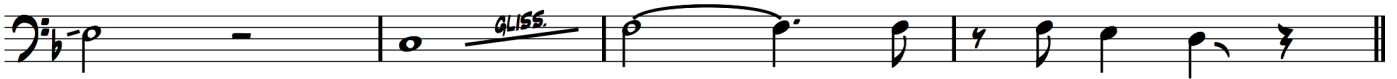


B \flat



C

F



F



B \flat



C

F



F



B \flat

F



C

F



F

Bb F

C F

F7

Bb

Eb Bb G7

C7 F7 Bb

Bb

Eb Bb G7

C7 F7 Bb

Bb CLAR.

B♭ TRPT.

9

9

GROWL

SOLO - 2:52

B♭

f

GROWL

E♭

B♭

G7

C7

F7

B♭

GROWL

GROWL

B♭

GROWL

E♭

B♭

G7

C7

F7

B♭

PIANO

10

B♭

9

GLISS.

Bb Eb Eb Eb C7 F7 Bb Bb G7 G7 Eb Bb Eb C7 F7 Bb Bb Eb G7 Eb Eb C7 F7 Bb Eb Bb G7 Eb Eb C7 F7 Bb Eb Bb G7 Eb Eb C7 F7 Bb Eb Bb G7

GLISS. GLISS. W/PLUNGER WAH THROUGHOUT GROWL GROWL GROWL GROWL GROWL GLISS. GROWL GROWL GROWL GLISS. GROWL GROWL GROWL