

LIL' LIZA JANE

FROM THE ALBUM, 12 & SHORTY

INTRO

♩ = 90

Musical notation for the Intro section. It begins with a 7-measure rest in the bass clef, followed by a half note F. The tempo is marked as quarter note = 90. The music is in 4/4 time with a key signature of one flat (Bb). The first staff shows the initial notes and a dynamic marking of *mf*. The following staves contain a complex rhythmic pattern of eighth and sixteenth notes, including triplets and slurs.

VERSE

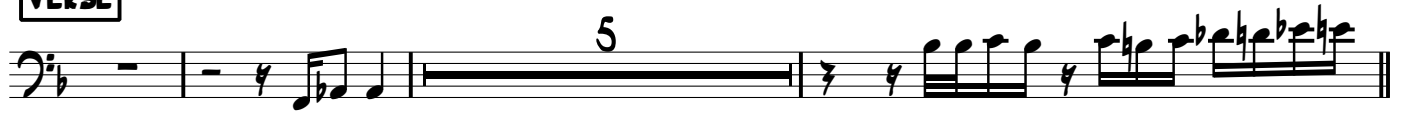
Musical notation for the first Verse section. It starts with a 7-measure rest in the bass clef, followed by a half note Bb. The music continues with eighth and sixteenth notes, featuring triplets and slurs.

VERSE

Musical notation for the second Verse section. It begins with a 7-measure rest in the bass clef, followed by a half note Bb. The music continues with eighth and sixteenth notes, featuring triplets and slurs.



VERSE



SOLO



FREELY - - -

